

Data Sheet



**Brackish Water
Reverse Osmosis (RO) Membranes**

LG BW 400 AFR G2

Anti-Fouling, High Rejection, High Flow, High Durability
Equipped with fouling tolerant low dP spacer technology

Overview

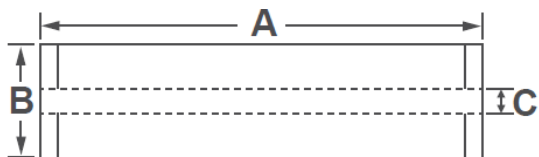
LG Chem's NanoH₂O™ brackish water RO membranes serve various municipal and industrial applications and have been operating in the major utilities around the world. Incorporating innovative Thin Film Nanocomposite (TFN) technology, all LG BWRO membranes provide superior performance along with intrinsic anti-fouling property and are suitable for applications where consistent and reliable performance is a must.

LG BW 400 AFR G2 membranes offer a combination of enhanced fouling resistance, high rejection, flow, durability and reduce total cost of ownership: suitable for high salinity brackish water and wastewater reuse applications with a challenging feed water. LG BW 400 AFR G2 membranes incorporate state-of-the-art feed spacer technology, which can greatly reduce differential pressure and cleaning frequency.

Product Specifications

| Active Membrane Area, ft ² (m ²) | Permeate Flow Rate, GPD (m ³ /d) | Stabilized Salt Rejection, % | Minimum Salt Rejection, % | Feed Spacer, mil |
|---|---|------------------------------|---------------------------|------------------|
| 400 (37) | 11,500 (43.5) | 99.7 | 99.6 | 34, low dP |

Test Conditions : 2,000 ppm NaCl at 25°C (77°F), 225 psi (15.5 bar), pH 7, Recovery 15%.
Permeate flows for individual elements may vary +/-15%.



| A, mm (in.) | B, mm (in.) | C, mm (in.) | Weight, kg (lbs.) |
|-------------|-------------|--------------|-------------------|
| 1,016 (40) | 200 (7.9) | 28.6 (1.125) | 16 (35) |

All dimensional information is indicative and for reference purpose only. Please contact LG Chem for detailed technical specification.

Operating Specifications

| | |
|---|-------------------------------|
| Max. Applied pressure | 600 psi (41 bar) |
| Max. Chlorine concentration | < 0.1 ppm |
| Max. Operating temperature | 45°C (113°F) |
| pH Range, Continuous (Cleaning) | 2-11 (1-13) |
| Max. Feedwater turbidity | 1.0 NTU |
| Max. Feedwater SDI (15 mins) | 5.0 |
| Max. Feed flow | 75 gpm (17 m ³ /h) |
| Max. Pressure drop (ΔP) for each element | 15 psi (1.0 bar) |

The Membrane Elements performance is expressly conditioned on Buyer's storing, installing, operating, and maintaining Product in accordance with industry-accepted good practices and Seller's written instructions provided in the Seller's Technical Manual, which consists of LG Chem, Ltd [Technical Service Bulletins \("TSB"\)](#) and [Technical Applications Bulletins \("TAB"\)](#) and may be viewed and downloaded at www.lgwatersolutions.com.

The information and data contained herein are deemed to be accurate and reliable and are offered in good faith, but without guarantee of performance. LG Chem assumes no liability for results obtained or damages incurred through the application of the information contained herein. Customer is responsible for determining whether the products and information presented herein are appropriate for the customer's use and for ensuring that customer's workplace and disposal practices are in compliance with applicable laws and other governmental enactments. Specifications subject to change without notice. NanoH₂O is the Trademark of The LG Water Solutions or an affiliated company of LG Chem. All rights reserved. © LG Chem, Ltd.

(06.21)

